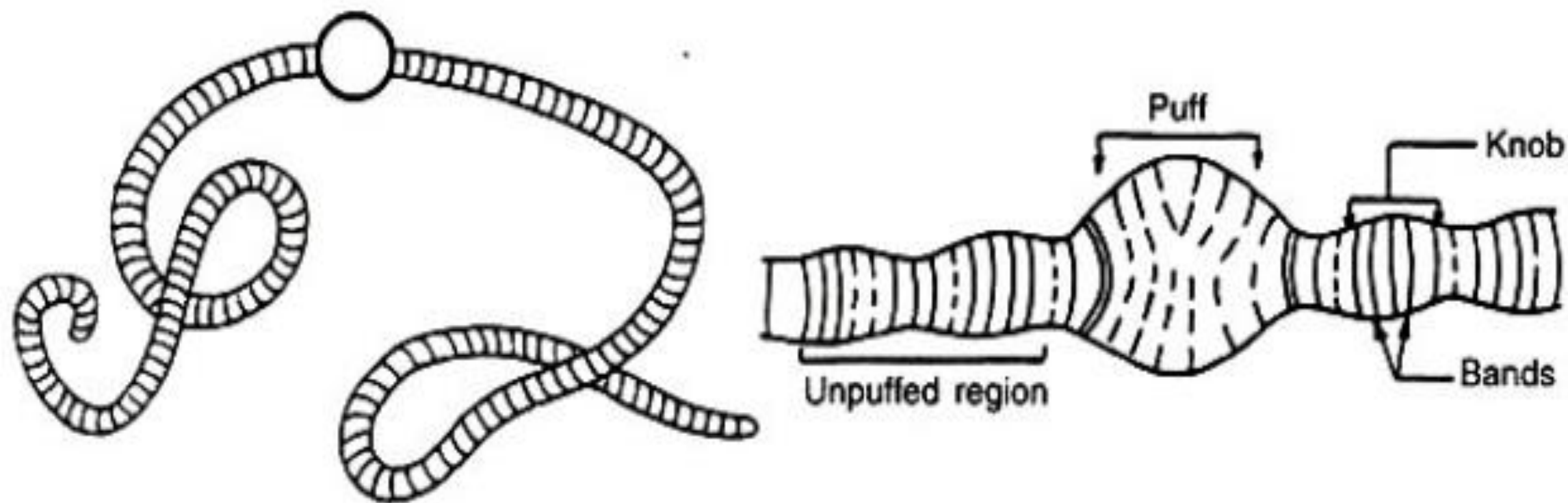


# **GIANT CHROMOSOMES**

16.10.2020

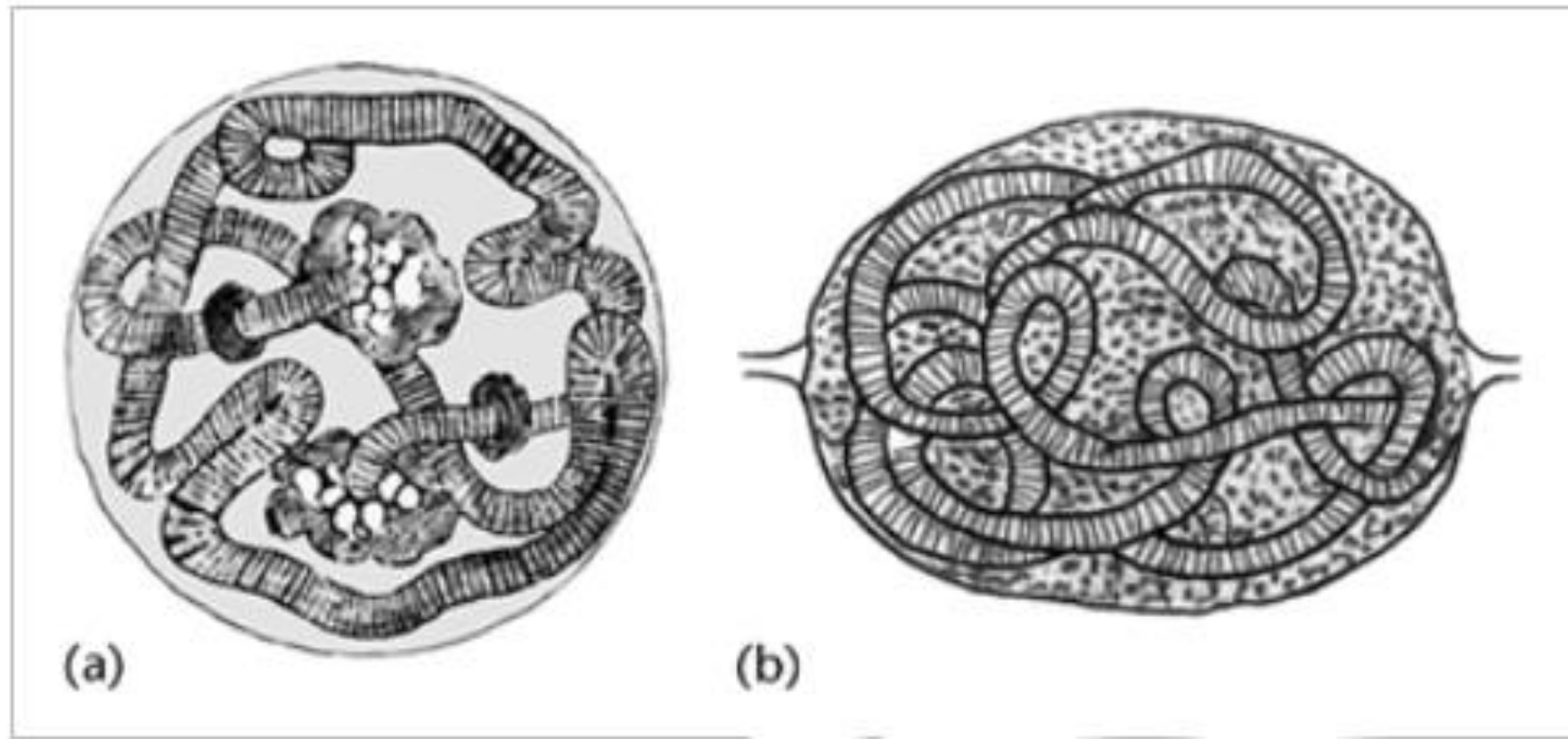


(a) Entire chromosome

(b) Enlarged view of a part

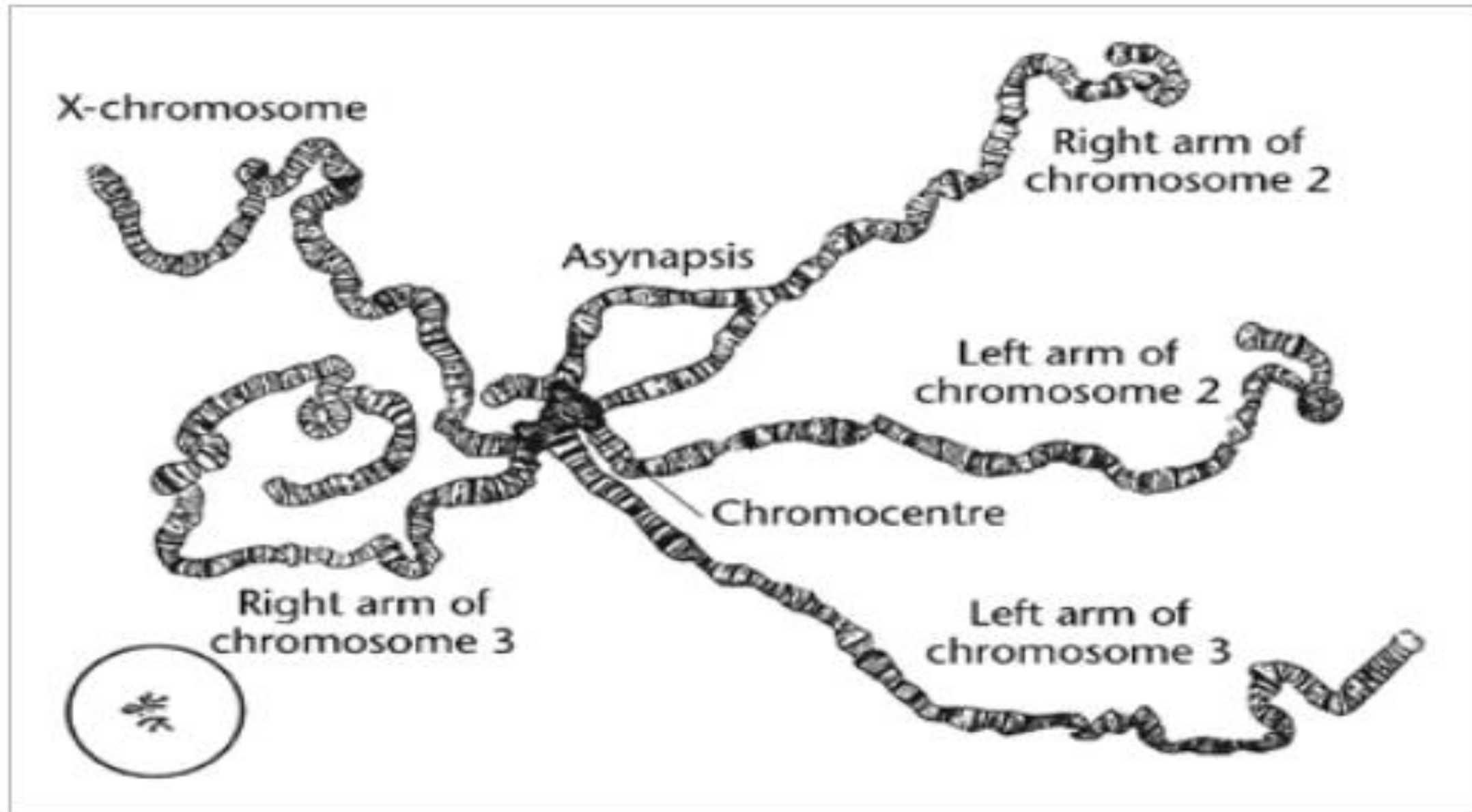
Fig. 4.4. Polytene chromosome of *Drosophila* : (a) whole chromosome, (b) enlarged part showing puffs and knobs.

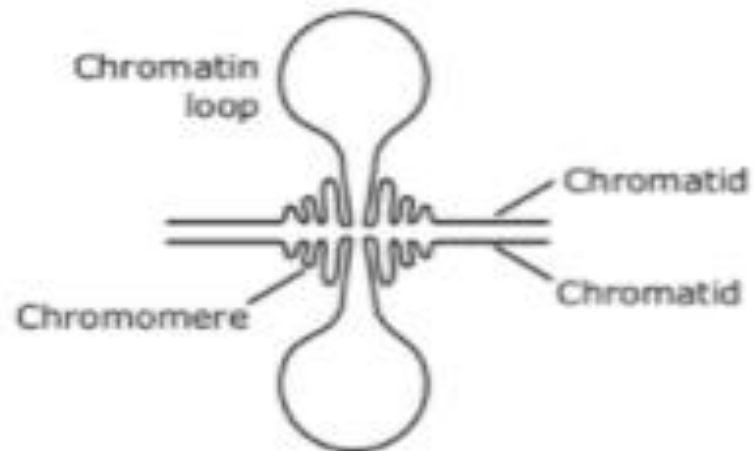
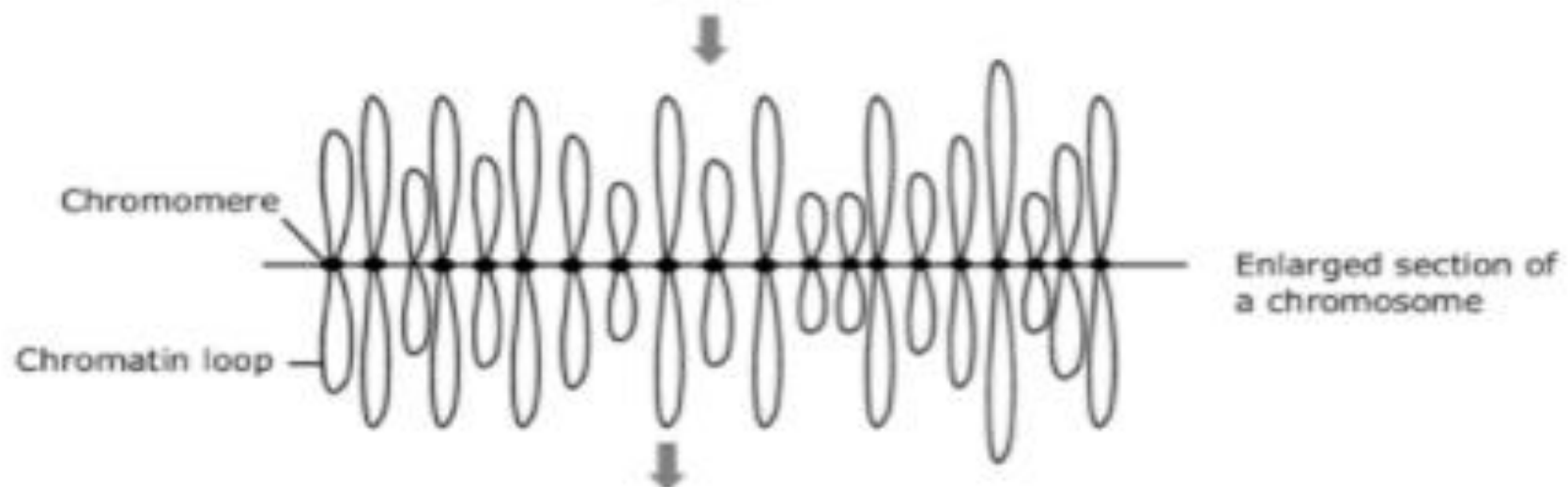
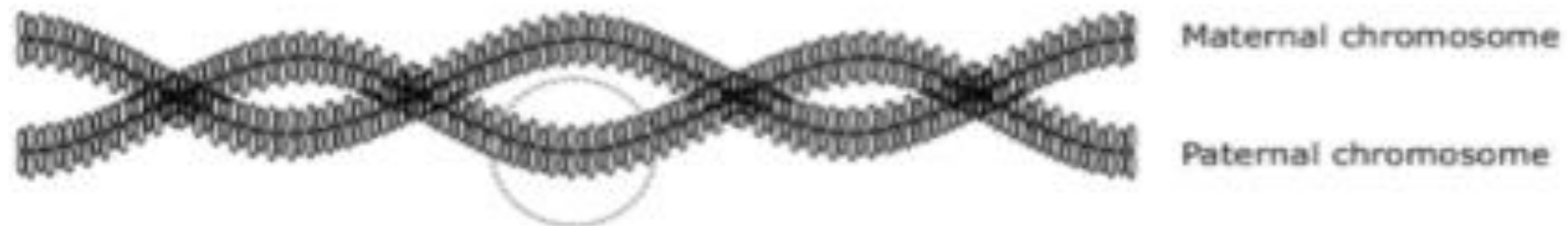


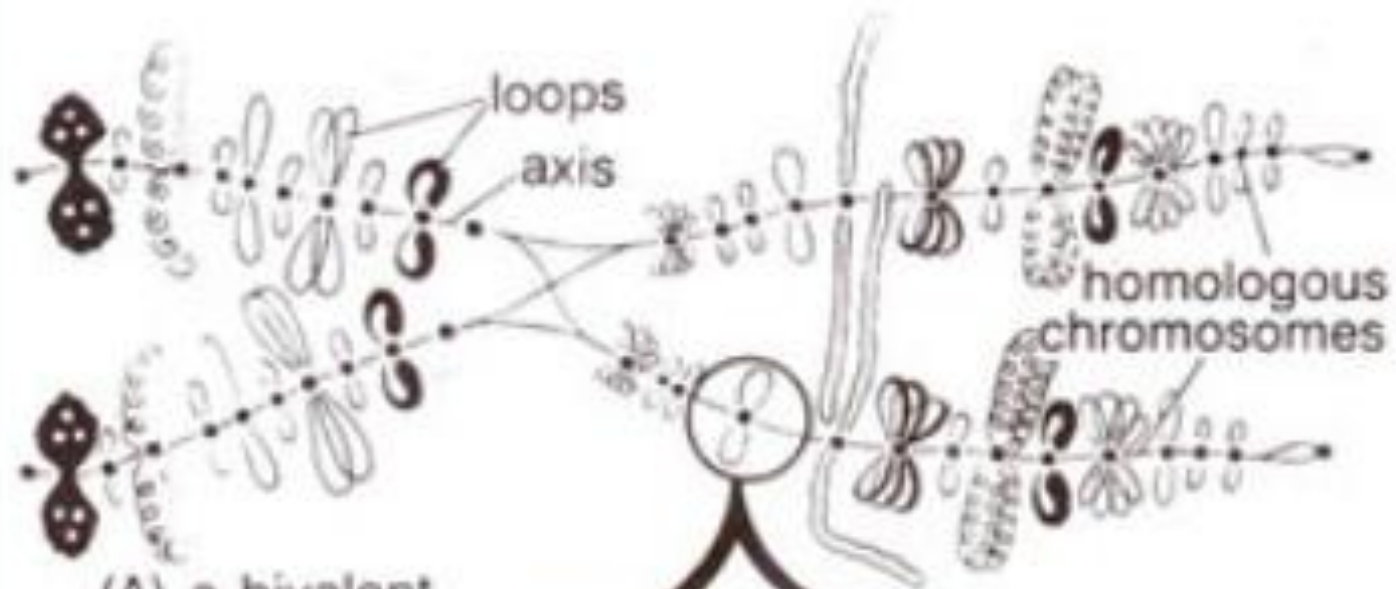


First drawings of polytene chromosome made by Balbiani in (1881) (a) and (1890) (b). (a) Salivary gland cells of *Chironomus plumosus* and (b) Macronucleus ( ) of *Loxophyllum meleagris*.

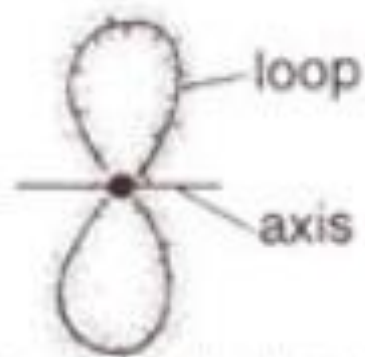
a polytene chromosome set of *Drosophila melanogaster*.



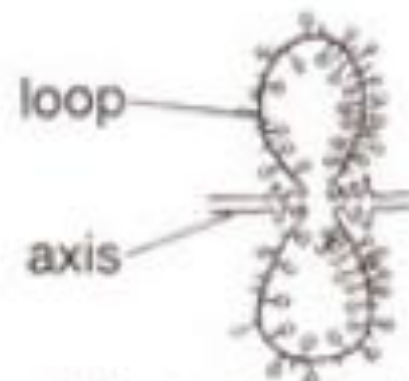




(A) a bivalent



(B) a single loop  
(observed structure)



(c) a single loop  
(inferred structure)